



GMT MONTHLY MEMBERSHIP PROGRESS REPORT

Results as of: 5/31/2020

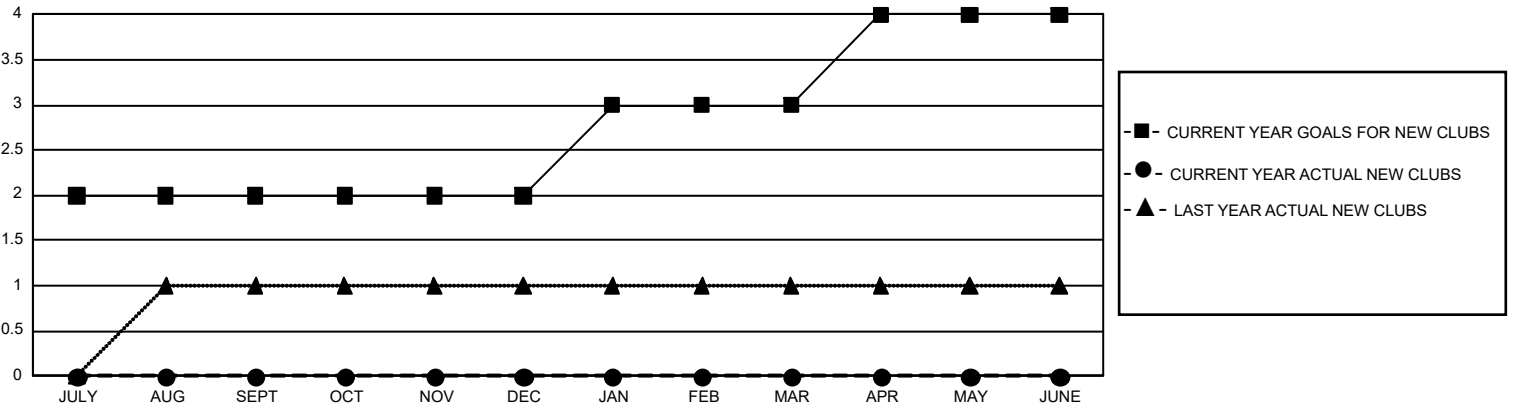
GMT Constitutional Area 7, Group B

GMT: OPEN

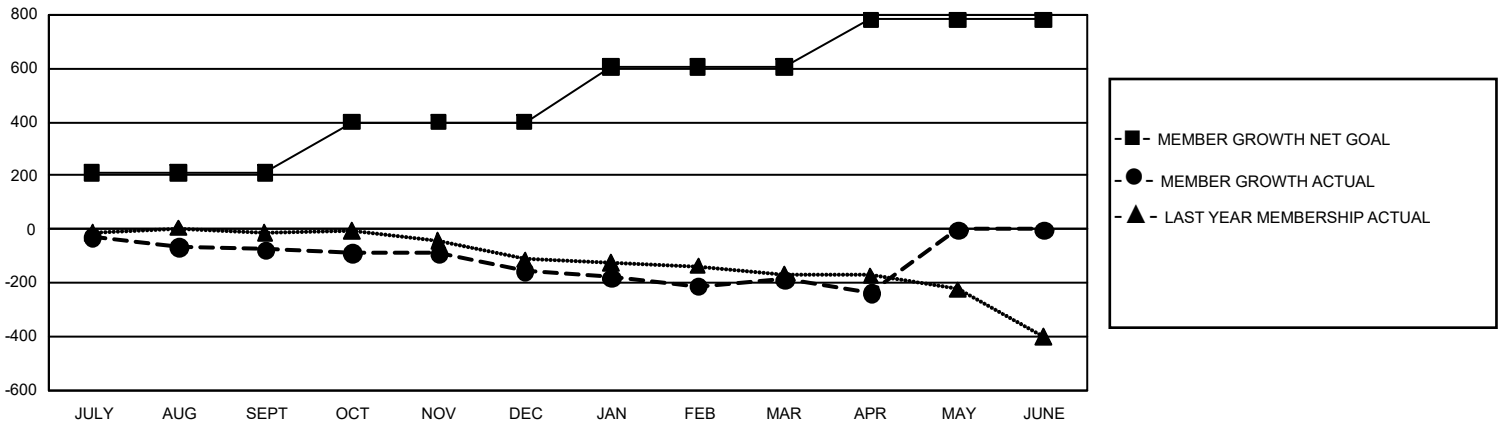
REPORT DOES NOT INCLUDE CLUBS IN UNDISTRICTED AREAS.

Clubs				Members			
RESULTS FOR 2019-2020				RESULTS FOR 2019-2020			
QUARTER	NEW CLUB GOAL	NEW CLUBS	DROPPED CLUBS	QUARTER	MEMBER GROWTH NET GOAL	MEMBER GROWTH ACTUAL	DROPPED MEMBERS ACTUAL (including transfers)
JULY/AUG/SEPT	6	0	1	JULY/AUG/SEPT	633	182	227
OCT/NOV/DEC	0	0	0	OCT/NOV/DEC	570	158	219
JAN/FEB/MAR	3	0	3	JAN/FEB/MAR	618	157	175
APR/MAY/JUNE	3	0	0	APR/MAY/JUNE	525	17	64

GOALS AND ACTUAL NEW CLUBS CUMULATIVE



GOALS AND ACTUAL MEMBERS CUMULATIVE



DROPPED CLUBS: 4	180 CLUBS OF 342 ADDED 1 OR MORE NEW MEMBERS	GENDER DISTRIBUTION MALE 6,227 (69.44%) FEMALE 2,741 (30.56%)
DROPPED MEMBERS DECEASED 128 CLUB CANCELLED 0 OTHER 555 <hr/> TOTAL 683	CLICK HERE FOR CUMULATIVE MEMBERSHIP DATA	TOTAL FAMILY UNIT MEMBERS 769 FAMILY MEMBERS PAYING HALF DUES 390